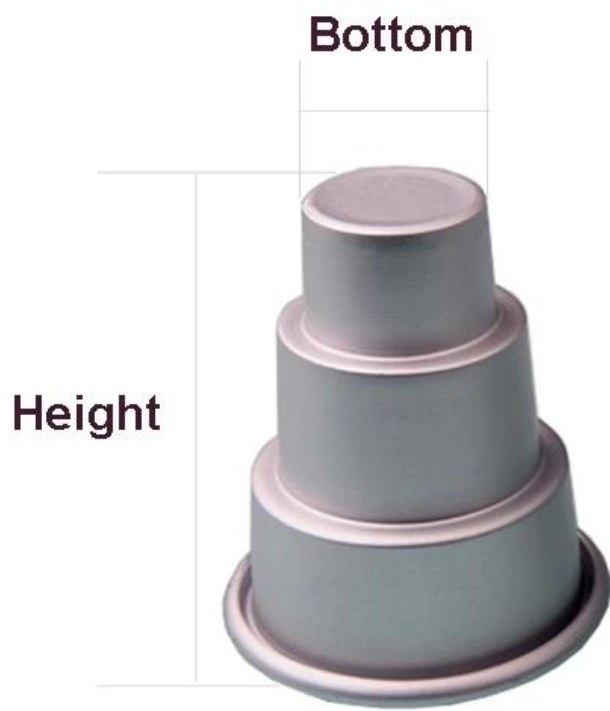


Wholesale 3 Tier Molded Pulp Fruit Tray Cake Decorating Supplies Baking Cake Tool

Picture Show:

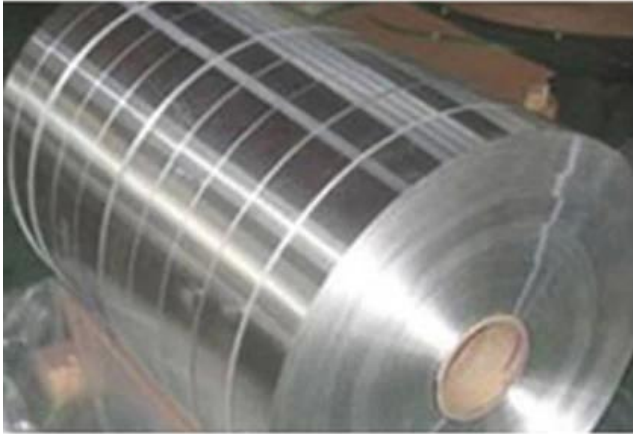






Factory Corner of Mold:

Raw Materials



Punching



Spinning



Tidying



Packing & Marking



Test Report:

Test Report

No. SCHL2105008719QA

Order: Jun 02, 2021

Page 1 of 4

XIXIN INDUSTRIAL CO., LTD
R. 7, Huifu Building, 4075 Longkang Road, Shenzhen, China

Sample Description	: PIZZA SHOVEL
Style No.	: 20CM
Item No.	: SPR-3036

As above test item and its relevant information regarding to the submission are provided and confirmed by the applicant, BOS is not liable to alter the test item or its relevant information, in terms of the accuracy, suitability, reliability and integrity accordingly.

SOB Ref No.	: CANH-Q2-100000001
Sample Receiving Date	: May 26, 2021
Test Performing Date	: May 26, 2021 to Jun 01, 2021
Test Performed	: Selected test(s) as requested by applicant

Test Result Summary

No.	Test(s) Requested	Result(s)	Comments
1	US FDA CPQ Sec. 843.500 - Leachate Lead	PASS	✓
2	US CMA recommended specification-Aluminum alloy composition	PASS	✓

For further details, please refer to the following page(s):

Signed for and on behalf of
SOS-CSTC Standards Technical Services Co., Ltd. Shunde Branch

Snow

Snow Zhang
Authorized Signatory



These programs appear to be in line with the Commission's support for its General Policy of Economic and Social Development, which is based on the principle of the free market and the free competition of goods and services. The Commission is also aware of the fact that the free market and the free competition of goods and services are essential for the development of the economy and for the well-being of the people. The Commission is also aware of the fact that the free market and the free competition of goods and services are essential for the development of the economy and for the well-being of the people. The Commission is also aware of the fact that the free market and the free competition of goods and services are essential for the development of the economy and for the well-being of the people.

Member of the SAS Group SAS SA



Test Report

No. SCHL210502ET110A

Date: Jun 02, 2021

Page 4 of 4

Photo Appendix



CANHG2109093601
CAN21-090936.001

Remark: This test was subcontracted to SGS-CSTC Standards Technical Services Co., Ltd. Guangzhou Branch.

END OF REPORT

[illegible]

Member of the IAGLR Group (IAGLR 14)

Our Company:

Shenzhen NewPlanet Industrial Co., LTD established in 2010, is professional [cake baking pan suppliers china](#) and [barbie cake tin suppliers china](#), we hold strict quality control, and each product is filled full of our true passion for technology and honest service.